

Welcome guest, [Login](#) | [Register](#)

[Home](#)



Binding Affinity Measurement of Antibodies from Crude Hybridoma Samples by SPR

[Immunology](#) > [Antibody analysis](#) > [Antibody-antigen interaction](#)

[Immunology](#) > [Antibody analysis](#) > [Antibody function](#)

[Biochemistry](#) > [Protein](#) > [Interaction](#) > [Protein-protein interaction](#)

[Mammalia](#) > [Murine](#) > [Cell line](#) > [Protein](#)

Authors: [Dorin Mlaki Ndao](#), [David T. Hickman](#), [María Pilar López-Deber](#), [Aurélien Davranche](#), [Andrea Pfeifer](#) and [Andreas Muhs](#)

[Vol 4, Iss 21, 11/5/2014, 85 views, 0 Q&A](#)

[Abstract] Surface Plasmon Resonance (SPR) is widely used to generate kinetic and affinity information on specific interactions between biomolecules. This technique is label-free and monitors the binding event in real-time. It is generally used for characterization of monoclonal antibody - antigen interactions. This protocol describes specifically the use of SPR with a Biacore T100 instrument to measure the affinity of crude hybridoma samples to a protein. For that purpose an anti-IgG antibody was firstly covalently immobilized onto a CM5 chip by amide coupling (Canziani *et al.*, 2004; Schraml and Biehl, 2012). Then the antibodies from hybridoma supernatants were captured non-covalently onto the surface via their Fc region providing an optimal analyte-binding orientation. Finally, the resulting complex was stabilized by crosslinking with EDC/NHS to avoid baseline drift during measurement and regeneration (Pope *et al.*, 2009). Then the interaction with the protein was monitored at several concentrations and its affinity towards the immobilized antibodies was determined with the corresponding K_D obtained from classical kinetics analysis. This set-up avoids the avidity effects of the bivalent antibodies, allows the use of non-purified analytes with unknown concentrations and the specific capture of the antibodies in a similar stable covalent-orientated manner.

Materials and Reagents

1. Dulbecco's phosphate buffered saline (D-PBS) (Sigma-Aldrich, catalog number: D8537) as running buffer during immobilization and binding analysis
2. Amine coupling kit (GE Healthcare, catalog number: BR-1000-50) containing:
 - a. 750 mg N-ethyl-N'-(3-dimethylaminopropyl) carbodiimide hydrochloride (EDC)
 - b. 115 mg N-hydroxysuccinimide (NHS)
 - c. 10.5 ml Ethanolamine-HCl (pH 8.5)
3. Mouse antibody capture kit (GE Healthcare, catalog number: BR-1008-38)
4. 10 mM acetate buffer (pH 5) (GE Healthcare, catalog number: BR-1003-51)
5. 10 mM acetate buffer (pH 5.5) (GE Healthcare, catalog number: BR-1003-52)
6. 10 mM Glycine-HCl (pH 1.7) (GE Healthcare, catalog number: BR-1008-38) as regeneration buffer
7. Reagents for immobilization (see Recipes)
8. Ligands (see Recipes)
9. Reagents for binding assay (see Recipes)
10. Analyte (see Recipes)

Equipment

1. Sensor chip with carboxyl groups available for the amine coupling reaction: Serie S sensor chip CM5 (GE Healthcare, catalog number: BR-1005-30)
2. Instrument for SPR analysis: Biacore T100 instrument and Evaluation Software (GE Healthcare)
3. Micropipettes (100-1,000 μ l) (Eppendorf, catalog number: 033023B)
4. Micropipettes (10-100 μ l) (Eppendorf, catalog number: 033021B)
5. Micropipettes (2-20 μ l) (Eppendorf, catalog number: 033019B)
6. Plastic vials (0.8 ml) (GE Healthcare, catalog number: BR-1002-12)
7. Rubber caps (type 3) (GE Healthcare, catalog number: BR-1005-02)

Software

1. Biacore T100 Evaluation Software (GE Healthcare)

Procedure

Immobilization of the antibodies from hybridoma supernatants

1. Prepare 167 μ l of 30 μ g/ml anti-mouse IgG solution in the 10 mM acetate buffer (pH 5).
2. The capture reagent anti-mouse IgG then was immobilized in four flow cells (fc) using the amino coupling protocol and following the instructions described in the "Mouse antibody capture kit" using the PBS buffer as running buffer. At the end of the anti-mouse IgG immobilization, the regeneration solution was injected three times to remove any anti-mouse IgG non-covalent bound to the chip, leaving intact the covalent bound anti-mouse IgG.

Note: Flow cells are formed when a microfluidic flow system is brought into contact with a sensor surface on which the ligand is immobilized. Here, the sample is injected separately through independent, unconnected flow cells, although other configurations as serial flow cells or hydrodynamic addressing flow cell systems are possible.

The reagents and parameters used for the different steps (activation of the carboxymethyl groups of the chip surface, ligand immobilization, surface deactivation and regeneration) are compiled in Table 1.

Note: An immobilization level of anti-mouse IgG around 9,000-10,000 Resonance Unit (RU) is usually obtained.

Table 1. Immobilization procedure of the anti-mouse IgG antibody

Cycle	Reagent	Flow cell (fc)	Contact time (sec)	Flow rate (μ l/min)
1	1:1 (v/v) mixture of EDC (0.4 M) and NHS (0.1 M)	1*, 2, 3, 4	420	5 μ l/min
	Anti-mouse IgG	1*, 2, 3, 4	420	5 μ l/min
	1 M Ethanolamine-HCl (pH 8.5)	1*, 2, 3, 4	420	5 μ l/min
2**	10 mM Glycine-HCl (pH 1.7)	1*, 2, 3, 4	3 times 60	50 μ l/min

*Notes: *Flow cell 1 serves as a reference cell and is only immobilized with the anti-mouse IgG.*

***This step is done in a different cycle and it is not shown in the Figure 1 below.*

3. An example of the sensorgram obtained for the anti-mouse IgG immobilization is shown in Figure 1 below.

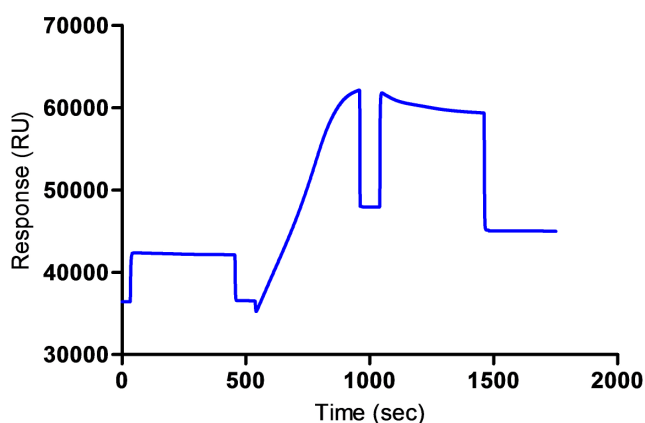


Figure 1. Immobilization of the anti-mouse IgG on the sensor chip

4. Prepare 300 μ l of hybridoma supernatant solution 5-fold diluted by mixing 60 μ l of the sample with 240 μ l of 10 mM acetate buffer (pH 5.5).
5. After the regeneration step, (in which the non-covalent bound anti-mouse IgG is removed from the surface without damaging non-covalent bound anti-mouse IgG), the antibodies from the hybridoma supernatants are captured non-covalently onto the surface via their Fc region by the anti-mouse IgG and the resulting complex is stabilized using a crosslink protocol independently on each flow cell.
6. After antibody coupling, 3 successive injections of regeneration were done.
7. The reagents and parameters used for cross-linking of the captured antibodies to the anti-mouse IgG (short activation of the carboxy groups, ligand immobilization, deactivation and regeneration) are compiled in Table 2.

Note: A maximum binding level of the antibodies coupled to the anti-mouse IgG around 1,500-2,500 RU should be obtained. Multiple injections of the diluted hybridoma supernatants can be done for reaching this binding level.

Table 2. Procedure of immobilization of the antibodies captured on the immobilized anti-mouse IgG antibody

Cycle	Reagent	Flow cell (fc)	Contact time (sec)	Flow rate (μ l/min)
3	1:1 (v/v) mixture of EDC (0.4 M) and NHS (0.1 M)	2, 3 or 4	30	5 μ l/min
4	Hybridoma supernatant antibody sample	2, 3 or 4	600-1,800	5 μ l/min
5	1 M ethanolamine-HCl (pH 8.5)	2, 3 or 4	420	5 μ l/min
6	10 mM Glycine-HCl (pH 1.7)	2, 3 or 4 3 times	60	50 μ l/min

8. An example of the sensorgram obtained for the antibody sample coupling is shown in the Figure 2 below.

Note: Alternatively, non-covalent capture of the antibodies without crosslinking can be performed by omitting the cycle 3 and cycle 5. For that, direct injection of the antibody sample is done after immobilization with the anti-mouse IgG, without performing an activation or deactivation of the surface. The non-covalent capture produces similar immobilization levels but the binding signal could decrease over cycles due to baseline drift during measurement and regeneration leading to lower dynamic range and decrease of the sensitivity of the assay.

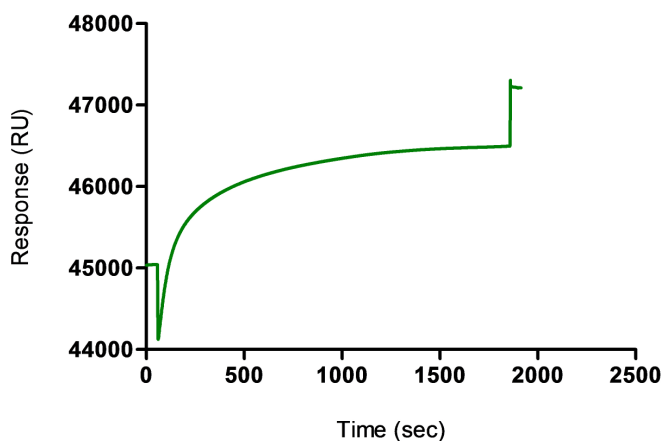


Figure 2. Coupling of antibody sample using the cross-linking protocol (cycle 4)

. Analyte preparation

In order to have an accurate measurement, the analyte should be in the same buffer as the continuous flow buffer to minimize bulk refractive index differences and avoid the so called bulk effect, so that can lead to low signal-to-noise-ratios. This is often most easily achieved through dilution of a concentrated analyte stock into running buffer. Therefore, the protein was diluted in the running buffer at a concentration of 4,000, 2,000, 1,000, 500, 250, 125, 62.5, 31.25, 15.63 and 0 nM before analysis.

. Binding assay

1. The binding assay was performed using PBS as running buffer.
2. Each dilution of the analyte sample was injected over flow cells 1, 2, 3 and 4. Injections were performed starting from 0 (PBS buffer blank) and followed by the lowest to the highest concentration at a flow rate of 50 μ l/min for 90 sec. Once the injection was finished, the dissociation was performed by passing running buffer over the chip during 600 sec.

Note: The contact time of the association phase should be long enough to have a curvature shape on the sensorgram and

the contact time of the dissociation phase should be long enough to have a flat sensorgram after dissociation phase.

- After association and dissociation of the analyte, a regeneration step was performed in order to remove the remaining bound analyte. The 10 mM Glycine-HCl (pH 1.7) was selected as the optimal regeneration solutions because it allows the removal of the analyte bound to the ligand without changing the activity of the immobilized ligand. This was confirmed by the equal responses obtained from the binding assays before and after regeneration. Regeneration was performed with one injection of 3 sec (2.5 μ l) of the regeneration solution. An example of the binding assay is shown in Table 3 below.

Table 3. Summary of the binding assay conditions

Cycle	Status	Reagent	Flow cell (fc)*	Contact time (sec)	Flow rate (μ l/min)
7	Association	Analyte (protein) (0 and 15.63-4,000 nM)	2-1, 3-1 or 4-1	90	50
	Dissociation	PBS buffer blank	2-1, 3-1 or 4-1	600	50
	Regeneration	10 mM Glycine-HCl (pH 1.7)	2-1, 3-1 or 4-1	3	50

Note: *Binding is studied on the sensorgrams subtracted with the reference flow cell fc1.

A sensorgram of protein-antibody sample interaction is shown in Figure 3.

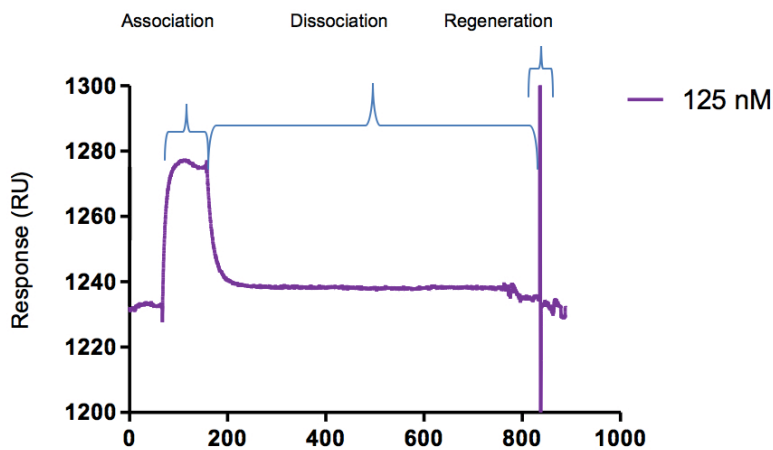


Figure 3. Binding assay

Data analysis

Data analysis is performed with the Biacore T100 Evaluation Software.

- Binding to the reference flow cell 1 was subtracted from each sample curve and maximal response unit was measured at 90 sec post injection.
- Best fitting was then established for 5 concentration of protein using the software. In general a 1:1 model Langmuir was selected for the fitting based on the expected interaction; alternatively in some cases a two-state reaction model was chosen.
- The kinetics constants (on-rate k_a and off-rate k_d) as well as the affinity (in terms of equilibrium dissociation constant K_D) were then calculated. An example of the final fitting results using 5 concentrations of protein and with a model 1:1 Langmuir fitting (black curves) is shown in the Figure 4 and Table 4.

Note: The final affinity measurement reported for the protein- antibody sample interaction was selected based on the Chi-square (χ^2), U-value and quality index.

The chi-square value is a quantitative measure of the closeness of fit, and in an ideal situation will approximate to the square of the short-term noise level. It is however difficult to recommend absolute values for acceptance limits for chi square: the values need to be considered from case to case, but it is advised to consider kinetics results with the lowest chi-square value.

The U-value obtained using the 1:1 binding model fitting, is an additional indicator of the parameter significance. This is a parameter that represents the uniqueness of the calculated rate constants and R_{max} , determined by testing the dependence of fitting on correlated variations between selected variables. Lower values indicate greater confidence in the results. A high value (above about 25) indicates that the reported kinetic constants contain no useful information. Finally, kinetic constants should be uniquely determined and within the limitation of the instrument.

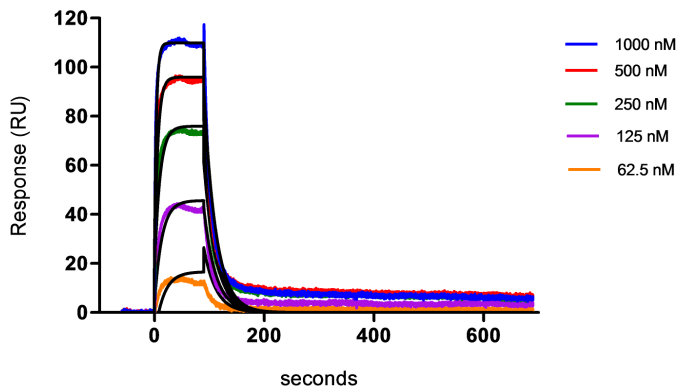


Figure 4. Affinity measurement

Table 4. Example of data extracted from the fitting procedure using the Biacore T100 evaluation software

Curve	ka (1/Ms)	kd (1/s)	KD (M)	KD (nM)	Rmax (RU)	Conc (M)	tc	Flow (ul/min)	kt (RU/Ms)	RI (RU)	Chi ² (RU ²)	U-value
	2.35E+05	4.60E-02	1.96E-07	196	110		5.27E+11				28.80	5
Cycle: 15 62.5 nM						6.25E-08		50	1.94E+12	-10.02		
Cycle: 16 125 nM						1.25E-07		50	1.94E+12	2.768		
Cycle: 17 250 nM						2.50E-07		50	1.94E+12	14.23		
Cycle: 18 500 nM						5.00E-07		50	1.94E+12	16.87		
Cycle: 19 1000 nM						1.00E-06		50	1.94E+12	17.87		

Note: R_{max} corresponds to the analyte binding capacity of the surface,
 tc corresponds to the flow rate independent part of the mass transfer constant,
 k_t corresponds to the mass transport constant and is calculate as following:

$$k_t = k_m * MW * 10^9$$

Where k_m corresponds to the mass transport coefficient and is a function of the flow rate, flow cell dimensions and diffusion properties of the analyte,

RI to the bulk refractive index contribution in the sample.

Notes

Please follow the manual of your SPR instrument to implement this protocol.

In our hands, the average \pm standard deviation for immobilization levels from 31 binding assay analyses was $2,326 \pm 558$ RUs.

Recipes

The following recipes were used to prepare the polyclonal antibody samples from our hybridoma supernatants and protein that were optimal for our assay.

1. Reagents for immobilization

Running buffer, Dulbecco's phosphate buffered saline buffer, modified without calcium chloride and magnesium chloride which contains:

2.7 mM KCl

1.5 mM KH₂PO₄

136.9 mM NaCl

8.9 mM Na₂HPO₄·7H₂O

2. Ligands

Anti-mouse IgG (Polyclonal rabbit anti-mouse immunoglobulin) diluted in 10 mM acetate buffer (pH 5.0)

Polyclonal antibody sample from hybridoma supernatants, diluted 5 fold in 10 mM acetate buffer (pH 5.5). The standard procedure for hybridoma supernatant generation is the following: After the fusion, the motherclones are plated onto 96-well plates (typically 32 plates with 50,000 cells/well) and the fusions are kept in culture for 10-14 days until clones become visible and cells are ready for screening. Four days before screening, the cell medium is changed in order to avoid false-positive signals from antibodies produced by non-surviving clones. The supernatants from wells containing surviving hybridoma cells (*i.e.* the splenocytes which successfully fused with myeloma cells) are tested by Luminex (for

the presence of antibodies with the desired binding profiles, likely “polyclonal” response) and selected motherclones are subcloned. Serial dilutions subcloning are done in an attempt to obtain single cell per well. Cells are left to grow for about two weeks and the wells containing single clones are tested for the presence of specific monoclonal antibodies. The stable, clonal hybridoma cells are expanded for 2 weeks in the serum-free cell culture medium. The supernatants are tested by Luminex to evaluate the concentration of the mouse IgG. Typically, the concentrations varied between 10 to 65 µg/ml. The example provided in Figure 4 and Table 4 is a polyclonal supernatant of a mother clone with a concentration of 20 µg/ml.

3. Reagents for binding assay

Running buffer, Dulbecco’s phosphate buffered saline buffer, modified without calcium chloride or magnesium chloride which contains:

2.7 mM KCl

1.5 mM KH₂PO₄

136.9 mM NaCl

8.9 mM Na₂HPO₄·7H₂O

4. Analyte

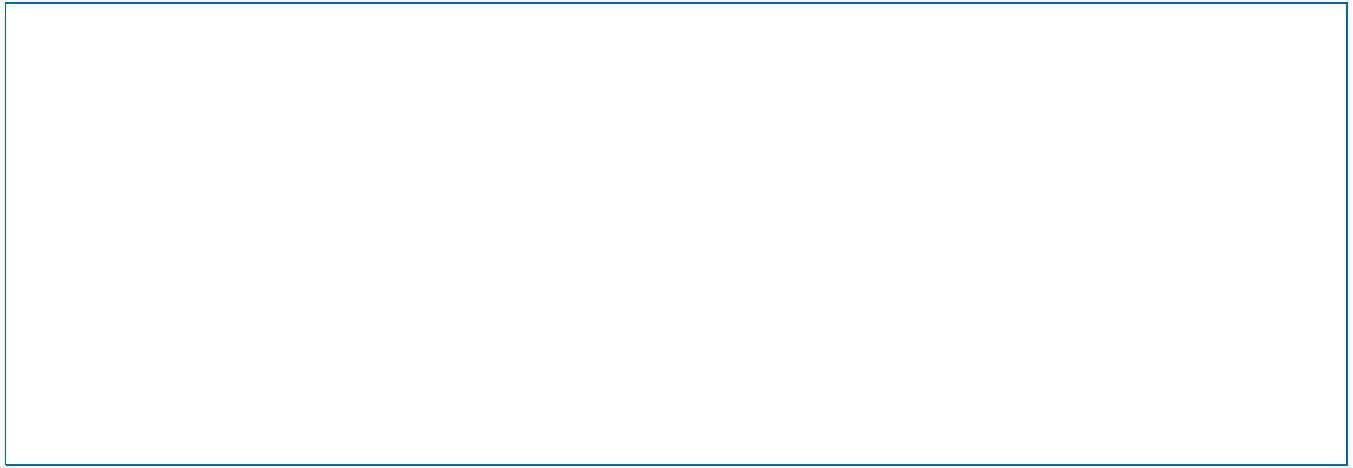
Purified protein diluted in the running buffer at 0.5 mg/ml

References

1. Canziani, G. A., Klakamp, S. and Myszka, D. G. (2004). [Kinetic screening of antibodies from crude hybridoma samples using Biacore](#). *Anal Biochem* 325 (2): 301-307.
2. Schraml, M. and Biehl, M. (2012). [Kinetic screening in the antibody development process](#). *Methods Mol Biol* 901: 171-181.
3. Pope, M. E., Soste, M. V., Eyford, B. A., Leigh Anderson, N., Pearson, T. W. (2009). [Anti-peptide antibody screening: selection of high affinity monoclonal reagents by a refined surface plasmon resonance technique](#). *J Immunol Methods* 341 (1-2): 86-96.

How to cite this protocol: Ndao, D. M., Hickman, D. T., López-Deber, M. P., Davranche, A., Pfeifer, A. and Muhs, A. (2014). Binding Affinity Measurement of Antibodies from Crude Hybridoma Samples by SPR. *Bio-protocol* 4(21): e1276.
<http://www.bio-protocol.org/e1276>

Questions and Comments:



We highly appreciate your feedback. Please login to post your questions/comments. Your questions will be directed to the authors of the protocol. The authors will be requested to answer your questions at their earliest convenience. Once your questions are answered, you will be informed using the email address that you register with bio-protocol.

[Login](#) | [Register](#)

Other
protocols
by Dorin
Mlaki
Ndao
Other
protocols
by David
T.
Hickman
Other
protocols by
María Pilar
López-Deber
Other
protocols
by
Aurélien
Davranche
Other
protocols
by
Andrea
Pfeifer
Other
protocols
by
Andreas
Muhs



[About Us](#) | [What's New](#) | [Submission](#) | [Archive](#) | [Terms](#) | [Contact Us](#)

© Copyright www.bio-protocol.org

